

UQK 系列浮球液位控制器

UQK float ball liquid level controller

用途说明 Application Description

UQK型浮球液位控制器适用于工业生产过程中敞开或承压容器内液位的控制。当液位到达高低极限时，继电器触点可作为信号报警装置或电动泵等线路中的开关。

The controller is suitable for controlling the position of liquid in open or pressurized container by the process of manufacturing, when liquid position reach to its limits, the contact of relay will be used as the alarm equipment or the swich of electrical pump.



BUQK-01

主要技术指标 Main Technical Data

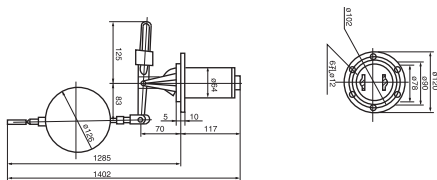
型号 Model	UQK-01	UQK-02	UQK-03	BUQK-01	BUQK-02	BUQK-03
防爆等级 Explosion-proof class						
介质压力 Medium pressure	1MPa	1MPa	1MPa	1MPa	1MPa	1MPa
介质温度 Medium temperature	150°C					
动作界限 (mm)	10	25-550	8-1000	10	25-550	8-1000
整定方式 Adjustment	不可调 No adjusting	有级可调 Have class adjusting	无级可调 No class adjusting	不可调 No adjusting	有级可调 Have class adjusting	无级可调 No class adjusting
安装方式 Installation	水平 Horizontal	水平 Horizontal	垂直 Vertical	水平 Horizontal	水平 Horizontal	垂直 Vertical
电源及触头容量 Power and outlet volume	AC 220V 220VA DC 100 150VA					



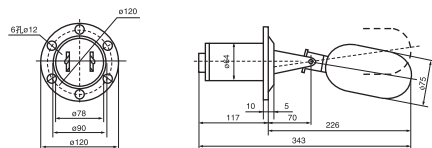
UQK-02

外形尺寸 Dimension

◇ UQK-03

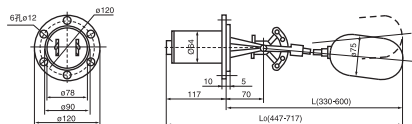


◇ UQK-01



UQK-03

◇ UQK-02



LZB 系列玻璃转子流量计

LZB glass rotor flowmeter

用途说明 Application Description

LZB系列玻璃转子流量计是带透明锥管能测量封闭管道中各种液体或气体的瞬间流量，直接观察介质流动状态的指示型仪表，广泛应用于化工、石油、轻工、医疗、化肥、食品、造纸、环保及合成纤维、科学研究等单位。

为适应化工部门的需要，除保持原来基型产品特点外，还制造了新型的有机玻璃转子流量计及高压下使用的金属管转子流量计，在基座等防腐性方面均匀为内衬聚四氟乙烯，使用单位根据需要任意选择。如有特殊需求，本厂能为客户提供各种非标生产设计，制造。

LZB glass turn flow gauge with a clear wimble tube, can measure instant flow of the gas or liquid in the closing tube, read the media flowing directly, widely used in chemical, oil light industry, medicinery, fertilizer, foodstuffs, paper making, environmental protection, fibine, science.

For the chemical DPT require, not only keep origin product character, but also had made new type organic glass turn flow gauge and metal turn flow gauge used in high pressure conditions added anti-corrosion material over the hbase, the user can select by his require freely. If you have a special require, we can supply all kinds of unstandard design, and make it out.



LZB-6



LZB-15



LZB-40F

主要技术指标 Main Technical Data

通径 Diameter (mm)	型号 Model	流量范围Flow range		精度 等级 Accuracy	耐压 Pressure bearance (Mpa)	允许被测介质 Medium		备注 Remarks
		液体(L/h)Liquid	气体(L/h)Gas			温度(°C) Temperature	压力(Mpa) Pressure	
4	LZB-4	1-10 1.6-16	16-160 25-250	2.5	≤1.5			
		2.5-25	40-400					
6	LZB-6	2.5-25 4-40	40-400 60-600	2.5	≤1.5			
		6-60	100-1000					
10	LZB-10	6-60 10-100	100-1000 160-1600	2.5	≤1.5			
		16-160	250-2500					
15	LZB-15	16-160 25-250	250-2500 400-4000	1.5	≤0.9	-20 -	≤0.6	
		40-400	600-6000					
25	LZB-25	40-400 60-600	1000-10000 1600-16000	2.5	≤0.6	+120	≤0.6	带导杆 With guide stick
		100-1000	2500-25000					
40	LZB-40	160-1600 250-2500	400-4000 6000-6000	1.5	≤0.6		≤0.4	带导杆 With guide stick
50	LZB-50	400-4000 600-6000	10000-100000 16000-160000	2.5	≤0.6		≤0.4	带导杆 With guide stick
80	LZB-80	1000-10000 1600-16000	50000-250000 80000-400000	2.5	≤0.6		≤0.4	带导杆 With guide stick
100	LZB-100	5000-25000 8000-40000	120000-600000 200000-1000000	2.5	≤0.6		≤0.4	带导杆 With guide stick

YS系列活塞式真空压力计

YS series piston-type vacuum pressure gauge



产品概述 Product Overview

活塞式真空压力计属于活塞式压力计的一种，主要用于校验0.16级、0.25级、0.4级精密压力表、量传压力计、检定压力计、压力变送器。其稳定性、重要性、准确度为大家所认可。由于活塞式真空压力计较其它压力计测量仪器测量结果其值可行性高、性能稳定，因此，使用广泛。

Vacuum pressure gauge of piston type is one of the piston pressure gauge varieties. It is mainly used for calibrating accurate pressure gauges, whose accuracy is 0.16, 0.25 and 0.4, transmitting pressure gauges, calibration pressure gauges, pressure transmitters, etc. Its stability, importance and accuracy is widely approbatory. Compared with other pressure metrical instruments, the measuring results of vacuum pressure gauge of piston type are highly workable and stable, so it is widely used.

性能特点 Function and Features

- 1、运用我厂核心技术推出来的压力计，各项指标完全符合JG236-2009《活塞式压力真空计》国家计量检定规程。
- 2、两个被检表接头处设计有两个截止阀，截止阀能及时关闭被检系统之间的压力。由于活塞式真空压力计在加砝码时，必须减压将活塞降下来，而被检精密压力表、压力变送器、传感器等和系统之间若不能被截止，表中的压力会随着活塞升降而升降，则考核不出被检表的回程误差，就不能符合精密压力表、压力变送器、压力传感器等检定规程的要求和耐压检定的要求。
- 3、活塞和活塞筒经精工研磨，其圆度误差和间隙极小，因而极大地提高活塞转动延续时间，也就相应减少活塞下降速度，提高活塞鉴别能力。
- 4、砝码已进行压力形变系数和当地重力加速度的修正。
- 5、测量范围：名义标称测量范围与实际测量范围一致。
- 6、可作为传递用检定活塞压力计；也可以高精度测试用。
- 7、同时检定两只被检表，采用快速接头，绝无泄露现象。

- 1、Developed from the core technology of our manufacturer, the pressure gauge conforms to the calibration standards of state measure: Vacuum Pressure Gauge of Piston Type JG236-2009
- 2、Two stop valves are installed on the connects of two calibrated gauges. The stop valves can close the pressure between calibrated systems. When adding weights on vacuum pressure gauge of piston type, the piston must be dropped by reducing pressure, while if accurate pressure gauges, pressure transmitter and transducer to be calibrated are not able to be stopped, the pressure inside gauges will increase and decrease with the piston going up and down. Then, the return error of calibrated gauges cannot be checked out. It does not conform to the requirements of calibration standards of accurate pressure gauges, pressure transmitter and pressure transducer, etc.
- 3、Through elaborate polishment, the piston and piston tube result in little error and the interstice is tiny. It largely increases the rotation time of piston, thus decreasing the falling speed of piston and improving the resolving ability of piston.
- 4、The weights have gone through the correction of pressure distortion factor and local gravity.
- 5、Measuring range: nominal measuring range is identical to actual measuring range.
- 6、It can be used for delivery of calibrating piston pressure gauge; and also for testing as high accuracy.
- 7、Use quick connect definitely without leakage when calibrating two gauges simultaneously.

8、无需外接气源。

YS-0.25型活塞式真空压力计的主要技术参数包括：活塞转动的延续时间、活塞的下降速度、活塞组的活塞有效面积、灵敏阀以及承重盘及其连接件和专用砝码的质量等。对于活塞式真空压力计的这些技术参数，国家都规定了具体的技术指标和相应的测量方法。在制造和周期检定环节，必须严格控制这些技术参数。对于使用者来说，只要对其有所了解便可，必须熟悉的是：活塞式真空压力计的选型参数。包括：规格型号、测量范围、精度等级、工作介质、砝码分组、标配接口等。这些都是关键的选型参数。本公司就向您介绍YS-0.25型活塞式真空压力计的这些技术参数。

8、No need for air source from outside.

Main technical parameters of YS-0.25 vacuum pressure gauge of piston type includes: durable time of piston rotation, falling speed of piston, effective area of piston group, weight of sensitive valve, loading pallet, connecting components, and exclusive-use weights. The state has specified specific technical standards and corresponding measuring ways with regard to the parameters of vacuum pressure of piston type. In the procedure of production and weekly checking, those parameters should be strictly obeyed. Operators should be equipped with some knowledge of it. What must be well familiar with are: model selection parameters of vacuum pressure gauge of piston type, including: specifications, measuring ranges, accuracy, working medium, weight group, standard connect, etc. Those are key model selection parameters. Therefore we introduce you the technical parameters of YS-0.25 vacuum pressure gauge of piston type.

主要技术参数 Main Technical Parameters

- ◇ 规格型号：YS-0.25
- ◇ 测量范围：-0.1 ~ 0.25(MPa)
- ◇ 精度等级：0.02级(±0.02%)
0.05级(±0.05%)
- ◇ 工作介质：洁净的压缩空气或瓶装氮气。
- ◇ 结构特征：带微调装置。
- ◇ 标配砝码：
-0.01MPa砝码1个；-0.02MPa砝码4个；-0.005MPa砝码2个；0.01MPa砝码2个；0.02MPa砝码3个；
0.05MPa砝码3个；接口螺纹(标配)M20×1.5；M14×1.5(可补充)型号：YS-0.25
- ◇ 接表螺纹：M20×1.5

- ◇ Scale range: YS-0.25
- ◇ Measuring range: -0.1 ~ 0.25(MPa)
- ◇ Accuracy class: 0.02 (±0.02%)
0.05 (±0.05%)
- ◇ Working medium: clean pressed air or bottled nitrogen
- ◇ Structural features: with fine adjustment device.
- ◇ Standard weight:
One -0.01MPa weights; four -0.02MPa weights; two -0.005MPa weights; two 0.01MPa weights;
three 0.02MPa weights; three 0.05MPa weights; connect thread (standard) M20*1.5; M14*1.5 (for
supplement); YS-0.25
- ◇ Connection thread: M20×1.5

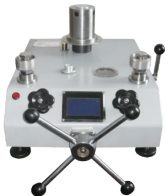
YS系列活塞式压力计

YS series piston-type pressure gauge

产品概述 Product Overview

YS系列活塞式压力计是我公司按照国家最新“活塞式压力计”检定规程及JJG59-2007要求新研发设计制造。是基于帕斯卡定律及流体静力学平衡原理产生的一种高精度、高复现性和高可信度的标准压力计量仪器。活塞式压力计也常简称压力计，也有称之为压力天平，主要用于计量室、实验室以及生产或科学实验环节作为压力基准仪器使用，也有将活塞式压力计直接用于高可靠性监测环节对当地其它仪表的表读监测。

YS series manometer is designed and developed by our manufacturer according to state's latest calibration regulations of piston-type manometer and JJG59-2007 requirements. It is a standard manometer of high accuracy, high reproducibility and high reliability. It is designed based on Pascal law and balance theory of hydrostatics. Piston-type manometer is always simply called manometer or pressure scale. It is mainly used in measure room, laboratory or applied as standard instrument during production or scientific experiment. It also can be used for detection of other instruments during detection procedure demanding high reliability.



性能特点 Function and Features

- 1、活塞和活塞缸均采用高强度、高硬度和低温度线胀系数的硬质合金碳化钨材料经过精心研磨制成，温度膨胀系数小，变形量小，因而保证活塞有效面积周期变化率小，工作环境温度宽，性能稳定。
- 2、由于采用新材料、新技术、新工艺，所以新的活塞式压力计的各项技术指标有了很大的提高。从而广泛用来检定数字压力计、精密压力表、压力变送器、压力传感器等压力仪器仪表。
- 3、负荷重心低，砝码通过砝码架直接加在活塞上，活塞运行平稳，压力波动极小，示值准确。
- 4、25MPa以上传压介质采用粘度很小的癸二酸二异辛酯，从而保证压力计有极高的灵敏度。
- 5、压力计所用砝码全部采用无磁不锈钢材料制作。(0.05级砝码采用碳钢)
- 6、活塞工作位置位移传感器监测，活塞上下行程 $\pm 1.5\text{mm}$ ，仪表显具有灵敏、醒目、准确等优点。
- 7、量程宽，在下限1MPa时，基本误差为 $\pm 0.01\%$ 、 $\pm 0.02\%$ 、 $\pm 0.05\%$ ， $\pm 0.05\%$ 。
- 8、功能：量传活塞式压力计、检定数字压力计、精密压力表、压力变送器等。
- 9、活塞材质：硬质合金(碳化钨)
- 10、砝码材质：不锈钢；碳钢
- 11、工作介质：25MPa以下为变压器油或变压器油跟煤油的混合油，25MPa以上为癸二酸二异辛酯。
- 1、Through elaborate polishment, piston and piston rod are all made of scleroid alloy of tungsten carbide material which is of high endurance, high hardness, coefficient of linear expansion in low temperature. Its features are low expansion factor, little deformation, so the rate of change of piston efficient area is low and it is stable and well adaptive to various environment.
- 2、Because of new material, new technology, new processing, the new piston-type manometer gets improved in many aspects of technical index. Thus, it is widely used for calibrating digital pressure gauges, accurate pressure gauges, pressure transmitter, pressure transducer, etc.
- 3、Weights can be directly added on piston via weight frame due to low loading center of gravity. The piston moves stably and pressure barely waves and the value is correct.
- 4、The pressure medium above 25MPa is di-iso-octyl sebacate of low viscosity which can keep the manometer highly sensitive.
- 5、All the weights are made of nonmagnetic stainless steel, (weight of 0.05 is made of carbon steel)
- 6、Working position of piston is detected by displacement sensor. Upper and lower distance is $\pm 1.5\text{mm}$. The instrument obviously is sensitive, distinct and accurate.
- 7、Wide measuring range, at 1MPa of lower limit, the basic error is $\pm 0.01\%$ 、 $\pm 0.02\%$ 、 $\pm 0.05\%$ 、 $\pm 0.05\%$
- 8、Function: value-transmitting piston-type manometer, calibrating digital manometer, accurate pressure gauge and pressure transducer, etc.
- 9、Material of piston: alloy of high hardness (tungsten carbide)
- 10、Material of weights: stainless steel; carbon steel.
- 11、Working medium: transducer oil or the mixture of transducer oil and kerosene oil if the pressure is below 25MPa; di-iso-octyl sebacate if the pressure is above 25MPa.

主要技术参数 Main Technical Parameters

测量范围和测量准确度等级在环境(20±5)°C,相对湿度≤80%,大气压力86–106KPa,温度波动不大于0.5°C条件下测试准确等级见表一。

Measuring range and accuracy class in the environment (20±5)°C, relative humidity≤80%, atmospheric pressure 86–106KPa, temperature fluctuation is no more than 0.5°C, accuracy class sees chart I.

型号 Model	量程范围 Scale range (MPa)	精度 Accuracy class	基本误差 Basic error	
YS-0.6	0.04 ~ 0.6	± 0.05% ± 0.02%	在整个测量范围内,其基本误差为实际测量压力值的±0.05% In the whole measuring range, the basic error is ±0.05% of actual measuring value	在整个测量范围内,其基本误差为实际测量压力值的±0.02% In the whole measuring range, the basic error is ±0.02% of actual measuring value
YS-6	0.1 ~ 6			
YS-25	0.5 ~ 25			
YS-60	1 ~ 60			

测量范围及砝码的质量和数量见表二

Measuring range & mass and quantity of weight see chart II

型号 Model		YS-0.6	YS-6	YS-25	YS-60	
参数 Parameter	单位 Unit	测量范围 Measuring range (MPa)				
		0.04 ~ 0.6	0.1 ~ 6	0.5 ~ 25	1 ~ 60	
标称上限: Nominal upper limit		MPa	0.6	6	25	60
标称下限: Nominal lower limit		MPa	0.04	0.1	0.5	1
测量上限: Measuring upper limit		MPa	0.6	6	25	60
测量下限: Measuring lower limit		MPa	0.04	0.1	0.5	1
活塞公称面积: nominal area of piston		CM ²	1	0.5	0.2	0.1
底座及活塞 Base and piston	公称质量: nominal mass	Kg	0.4	0.5	1	1
	产生的压力: pressure	MPa	0.04	0.1	0.5	1
	公称质量: nominal mass	Kg	0.1/0.5	0.5/2.5	1/2.5	1/2.5
	产生的压力: pressure	MPa	0.01/0.005	0.1/0.5	0.5/1/2.5	1/2.5
	数量 Quantity	个	6/10	4/11	2/1/9	2/1/11
螺纹 Thread			M20 × 1.5	M20 × 1.5	M20 × 1.5	M20 × 1.5
重量 Weight		Kg	35	60	80	90
工作介质 Working medium		变压器油或变压器油与煤油的混合油 20°C 时运动粘度 9 ~ 12 m ² /s, 酸值不大于 0.05 mA KOH/g transformer oil or mixture of transformer oil and kerosene viscosity is 9~12m ² /s when moving at temperature of 20°C acid value ≤0.05 mA KOH/g			癸二酸(2-乙基己基)酯 20°C 时运动粘度 20 ~ 25 m ² /s, 酸值不大于 0.05 mA KOH/g When Dioctyl sebacate (2-ethylhexyl) gets to the temperature of 20°C, its kinematic viscosity is 20~25m ² /s, acid value is no more than 0.05 mA KOH/g	

日常保养维修常识 Knowledge of daily maintenance and repair

- 保持压力计清洁,压力计不放在温度过高的环境中,以免锈蚀。
 - 快速接头和活塞下端O型圈较易损坏,若发现泄漏应予以更换。
 - 油杯中液面应经常高于油杯过滤罩上端面,若一时疏忽,空气将进入预压泵中,造成预压泵失效。这时应拧松预压泵进油接头,使空气随液体流出,当液体呈连续流出时,即可拧紧接头,恢复预压泵功能。
- Keep the pressure gauge clean, do not put it in high-temperature environment in case of corrosion
 - Quick connect and O-ring beneath piston are vulnerable, replace it if there is leakage.
 - Liquid level inside oil cup should always be above the face of filter hood. Air moves into the prepressing pump because of lapse of attention, resulting in ineffectiveness of the pump. Then, screw off the connect of prepressing pump, making the air flow out with the liquid. The liquid flow out without interruption, screw tight the connect and recover the function of pump.

LZWY-2-A型便携式压力发生测试仪

LZWY-2-A portable pressure tester

产品概述 Product Overview

LZWY-2-A型便携式压力发生测试仪是专门为现场仪表和传感器的调校而设计的智能型高精度校验仪器，内部采用微型气泵，对外提供稳定的压力信号，既可测量压力，也可测量电压电流，具有24V馈电输出，可直接校验小量程压力变送器，另配接高精度压力变送器，配合大量程压力发生器(液压)，这样可实现从小量程到大量程压力的发生与测量，即小量程压力输出与测量由压力发生测试仪直接完成，大量程压力输出与测量需由大量程压力发生器和专用压力模块配合便携式压力发生测试仪完成。便携式压力发生测试仪内装大容量镍氢充电电池，可交直流两用，具有体积小、重量轻、携带方便等优点，是现场仪表校验和维修的理想产品。

LZWY-2-A portable pressure tester is an intelligent high precision calibration instruments specially designed for field instruments and sensors calibration. Internal is the micro pump which could provide stable pressure sign. It can not only measure pressure, but also measure voltage and current, input 24V feed power. It can directly check small range pressure transmitter, match with high precision pressure transmitter and big range pressure generator(hydraulic), so that can realize measurement from small scale to big scale. Which is small scale pressure output and measured by pressure tester directly, big scale pressure output and measured by pressure generator and special modules match with portable pressure tester.

Portable pressure tester built-in high-capacity nickel-metal hydride rechargeable batteries, ac/dc, has the character of small volume, light weight, convenient to carry, etc. which is an ideal product for field instrument calibration and maintenance.

性能特点 Function and Features

- 1、具有高精度和高稳定压力信号输出和测量。
- 2、具有输入直流V,mV,mA。
- 3、可配接高精度压力变送器。
- 1、High precision and high stability of pressure sign output and measurement
- 2、Input DC V, mV, mA.
- 3、Match high precision pressure transmitter

主要技术参数 Main Technical Parameters

- | | |
|--|---|
| ◇1.输出压力(kPa):
0-100.00 kPa 分辨率0.01 kPa 准确度: 0.05% | ◇ 1.output pressure(kPa):
0-100.00 kPa distinguishability 0.01 kPa accuracy: 0.05% |
| ◇2.测量压力(kPa):
内接压力传感器: 0-100.00 kPa
分辨率:0.01 kPa 准确度: 0.05% | ◇2.measuring pressure(kPa):
Inscribed pressure sensor: 0-100.00 kPa
distinguishability: 0.01 kPa accuracy: 0.05% |
| ◇3.测量压力(MPa):
外接压力传感器: 0-60.00MPa
分辨率: 0.001MPa 准确度: 0.05%
(量程由外接压力传感器而定) | ◇3. measure pressure(MPa):
Out-proportioning: 0-60.000MPa
distinguishability: 0.001MPa accuracy: 0.05% |
| ◇4.输入电信号
a.电压: DC 00.000-30.000V
分辨率: 1 mV, 准确度:0.05%
b.毫伏DC 0.00-300.00 mV,
分辨率: 10uV 准确度: 0.05%
c.毫安DC 0.000-30.000mA
分辨率: 1uA, 准确度: 0.05% | ◇4. output electrical signal
c.voltage: DC 00.000-30.000V
distinguishability: 1 mV, accuracy: 0.05%
d.millivolt: DC 0.00-300.00 mV,
distinguishability: 10uV accuracy:0.05%
c. milliampere: DC 0.000-30.000mA
distinguishability: 1uA, accuracy:0.05% |
| ◇5.输出直流电源: 24V DC30mA; (外接压力变送器专用) | ◇5. output current power: 24V DC30mA; (connected with pressure transmitter) |
| ◇6.外形尺寸: 240×280×90 | ◇6. Dimension: 240*280*90 |
| ◇7.功耗: 10W | ◇7.power dissipation: 10W |
| ◇8.重量: 2kg | ◇8.weight: 2kg |
| ◇9.仪器工作条件: 环境温度: -20-40℃,
相对湿度: 10-90RH | ◇9. Working condition: temperature:-20-40℃,
relative humidity: 10-90RH |

HQ-PLJ-01 交变压力试验机

HQ-PLJ-01 alternating pressure testing machine



技术指标 Technical Parameters

- ◇ 被测压力表适用范围: 1~100KPa 0.1~1MPa;
- ◇ 交变压力上限: $\leq 0.75\text{MPa}$ 可调;
- ◇ 交变次数设计: 计数器设计, 完成后自动停机并报警;
- ◇ 压力源: 压缩空气($\geq 0.8\text{MPa}$)
- ◇ 压力实验介质: 压缩空气。
- ◇ Measured range for calibrated pressure gauge: 1~100KPa 0.1~1MPa
- ◇ Alternating pressure limitation: $\leq 0.75\text{MPa}$,
- ◇ Alternating number: automatic counting; When reaching the certain value, it will stop and then alarm.
- ◇ Pressure supply: compressed air ($\geq 0.8\text{MPa}$).
- ◇ Pressure test medium: compressed air.

HQ-PLJ-02 交变压力试验机

HQ-PLJ-02 alternating pressure testing machine



技术指标 Technical Parameters

- ◇ 被测压力表适用范围: 1.6~60MPa;
- ◇ 交变压力上限: 1.2~60MPa 可调;
- ◇ 交变次数设计: 计数器设计, 完成后自动停机并报警;
- ◇ 压力源: 压缩空气($\geq 0.6\text{MPa}$)
- ◇ 压力实验介质: 20#机油。
- ◇ Measured range for calibrated pressure gauge: 1.6~60MPa
- ◇ Alternating pressure limitation: 1.2~60MPa.
- ◇ Alternating number: automatic counting; When reaching the certain value, it will stop and then alarm.
- ◇ Pressure supply: compressed air ($\geq 0.6\text{MPa}$).
- ◇ Pressure test medium: 20# engine oil.

HQ-PLJ-03压力交变疲劳实验机

HQ-PLJ-03 alternating-pressure fatigue testing machine

产品概述 Product Overview

HQ-PLJ-01全新一代智能型半自动压力交变疲劳机。该机采用微电脑控制器，操作简单，工作稳定，噪音低。具有调压调频，工作压力自动补偿，疲劳的规格，疲劳次数，疲劳时间自动存储，自动诊断检测，过压限压保护，停机报警等功能。是压力表生产企业，计量院所，实验室的理想产品。

PLJ-01 is the latest intelligent semi-automatic Pressure Alternating Fatigue Machine. It uses the Micro-computerized Controller, which is easy operation, stability, low noise. It has the function of working pressure automatic compensation, fatigue specification and fatigue time store automatically, diagnostic testing automatically, overpressure protection, halt alarm, ect. It is the ideal product for pressure instruments produce enterprises, measurement institutions and pressure instruments using institutions.



规格参数 Main Technical Data

- ◇工作介质：46号液压抗磨油
- ◇压力范围：0-100MPa
- ◇脉冲频率：30-60次
- ◇计时范围：0-10000H
- ◇压力接口数量：20个或定制
- ◇工作电源：220V50Hz 380V50Hz
- ◇外形尺寸：1150*950*750（毫米）
- ◇Working medium: No.46 hydraulic oil AW
- ◇Pressure range: (0-100) MPa
- ◇Impulse frequency: 30-60 times
- ◇Timekeeping range: 0-10000H
- ◇Pressure connectors: 20 or as requirements
- ◇Working power: 220V50Hz 380V50Hz
- ◇Dimension: 1150 x 950 x 750(mm)

规格 Specification	上限 ±5% Upper Limit ±5%	下限 ±5% Lower Limit ±5%	频率 Frequency
10MPa	12 MPa	4 MPa	45次/Min 45times/Min
25 MPa	19 MPa	6 MPa	45次/Min 45times/Min
40 MPa	30 MPa	10 MPa	40次/Min 40times/Min
60 MPa	45 MPa	15 MPa	30次/Min 30times/Min
100 Mpa	80 Mpa	20 Mpa	30次/Min 30times/Min

HQ-SJT-60MPa-03中高压压力表校验台

HQ-SJT-60MPa-03 mid-high pressure gauge calibration equipment



产品概述 Product Overview

主要用于压力仪表的调试、校验、检验、校准以及测试。可供压力仪表的生产企业、使用厂家和计量科学研究院等使用。

HQ-SJT-60MPa-03 mid-high pressure gauge calibration equipment is used to adjust and calibrate and check pressure gauge. It can be used in pressure gauge producers and institutes for metrological technology.

技术指标 Technical Parameters

- ◇ 压力范围：0-60MPa
- ◇ 使用规格：40-60MPa(其它规格可订制)
- ◇ 最高压力：65MPa
- ◇ 过载压力：70MPa
- ◇ Scale range: 0-60MPa
- ◇ Usage pressure: 40-60MPa
- ◇ Max pressure: 65MPa
- ◇ Overload pressure: 70MPa

SJT-03型中高压压力校验台

SJT-03 mesohigh pressure calibration console



产品概述 Product Overview

SJT-03型中高压压力校验台是我公司最新研发的高端压力校验设备。该设备广泛应用于压力仪表的校验、检验、调试过程，具有操作方便，省时省力，控压准确，稳定，噪音小，无油污等特点。是压力仪表生产企业，计量校准单位和压力仪表使用单位传统检验装置的理想更新换代产品。

SJT-03 Mesohigh pressure calibration console is the latest research and development of high-end product. This equipment is widely used in adjusting, checking, debugging process. It has the character of easy operation, high accuracy of pressure control, high stability, low noise, no oil contamination and so on. It is the ideal product for pressure instruments produce enterprises, measurement institutions and pressure instruments using institutions.

主要技术参数 Main Technical Data

- ◇ 工作介质：变压器油或纯净水(但不可混用)
- ◇ 压力范围：(0-60)MPa
- ◇ 使用规格：参考表格(其他规格请咨询，可定制)
- ◇ 最高压力：65MPa
- ◇ 设计压力：70MPa
- ◇ 工作气源：纯净压缩空气
- ◇ 工作电源：AC220V/50Hz
- ◇ Working medium: transformer oil or Clearwater
- ◇ Pressure range: (0-60)MPa
- ◇ The highest pressure: 65MPa
- ◇ Design pressure: 70MPa
- ◇ Working air supply: pure compressed air
- ◇ Working voltage: AC220V/50Hz

型号 Model	量程 Scale Range	驱动气源 Drive air supply	介质 Medium
SJT-03A	(0,1-0,6)MPa	≥0,8 MPa	空气 Air
SJT-03B	(0,1-2,5)MPa	≥2,7 MPa	空气 Air
SJT-03C	(1-2,5)MPa	≥2,7 MPa	空气 Air
SJT-04A	(0,4-2,5)MPa	≥0,8 MPa	变压器油或纯净水 Transformer oil or clearwater
SJT-04B	(1-2,5)MPa	≥0,8 MPa	变压器油或纯净水 Transformer oil or clearwater
SJT-04C	(4-16)MPa	≥0,8 MPa	变压器油或纯净水 Transformer oil or clearwater
SJT-04D	(25-60)MPa	≥0,8 MPa	变压器油或纯净水 Transformer oil or clearwater

QXT-02半自动校验、检测台

QXT-02 Semi-automatic calibration equipment



QXT-02

技术指标 Technical Parameters

- ◇ 检测校验范围：0.1~1MPa压力表
- ◇ 压力介质：压缩空气（ $\geq 0.8\text{MPa}$ ）
- ◇ 压力实验介质：压缩空气。
- ◇ Calibration range: 0.1~1MPa for pressure gauge
- ◇ Pressure supply: compressed air ($\geq 0.8\text{MPa}$)
- ◇ Tested pressure medium: compressed air

BBY型压力表、氧气表两用检验器

BBY400、BBY600 calibration equipment for pressure gauge and oxygen gauge

产品概述 Product Overview

BBY400、BBY600型压力表、氧气表两用检验器利用帕斯卡原理，采用手动杠杆下的柱塞泵产生压力，设计二级油水隔离装置。适用于各级计量检定机构、工矿、企业计量部门及压力表生产厂家采用对比法检定普通压力表、氧气压力表和其他禁油压力表提供压力源，或对小容量液体压力系统进行检漏。

BBY400、BBY600 calibration equipment for pressure gauge and oxygen take advantage of Pascal's law, produce pressure by hand-actuated piston pump, and have a second-class oil-water separation device. Metrological verification organ and company's metrological department and pressure gauge producers can use it to calibrate pressure gauge, oxygen gauge or other oil-free pressure gauge, and detect leakage for small-capacity hydraulic pressure system.



BBY400

技术指标 Technical Parameters

- ◇ 工作范围：BBY400型为0~40MPa，
BBY600型为0~60MPa。
- ◇ Measuring range: 0~40MPa for BBY400
0~60MPa for BBY600